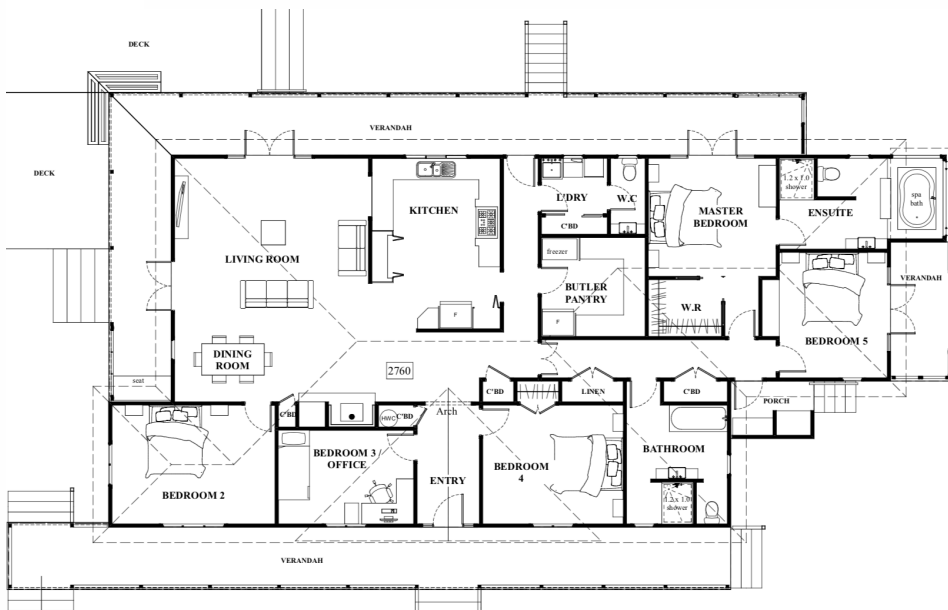


# The Kingsland Design Plan



#### AREAS:

House	212.65m <sup>2</sup>
Deck	46.43m <sup>2</sup>
Verandah:	
front	37.89m <sup>2</sup>
north	48.92m <sup>2</sup>
porch	3.96m <sup>2</sup>
east	7.20m <sup>2</sup>
	97.97m <sup>2</sup>

**Elegant 212m<sup>2</sup> home with an additional 98m<sup>2</sup> of verandah, 5 Generous Bedrooms, 2.5 bathrooms, Separate Laundry, Large Butlers Pantry**

Taking its inspiration from the 1880's, the Kingsland home reflects the best of the era, featuring post brackets and column mouldings on the front verandah as well as eve brackets and finial. From the dazzling entrance, to the internal living spaces, you are sure to fall in love with this home.

This large home offers plenty of space, including the luxury of a walk-in pantry and the ambience of a fireplace for the cooler evenings.



**HERITAGE  
HOMES**



# The Kingsland Design Plan



All our designs are completely customisable so if you'd like to widen or lengthen this design, flip it sideways, or change the layout - anything is possible to suit the needs of your family or property.

We are always available to chat through the options with you.